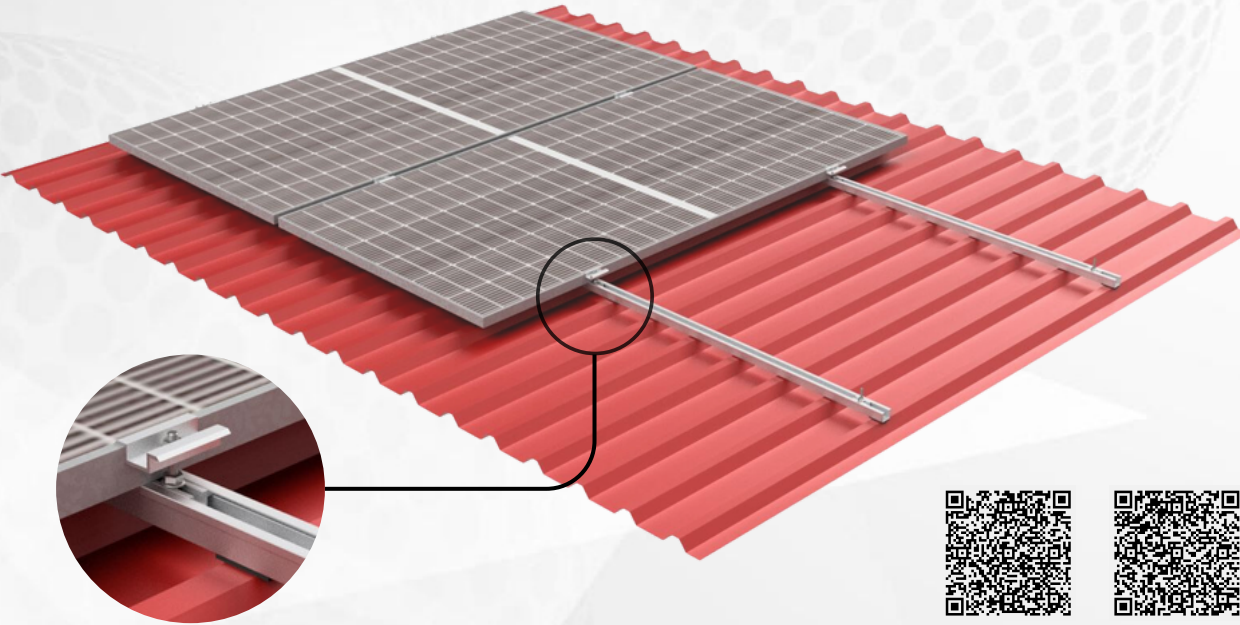


# GULPIYURI 30 SYSTEM – BARS

This sectional structure system has been specially designed for the assembly of solar panels in a coplanar manner on sheet metal roofs.



BLUEPRINT TYPE



WARRANTY

## TECHNICAL SPECIFICATIONS

- Structure system valid for installation on sheet metal roofs.
- Variable length bars for installation on ribbed sheet metal (horizontal panel) and from ribbed sheet metal to ribbed sheet metal (vertical panel).
- 30mm panel elevation.
- Configurable for all types of panels.
- Option of fastening the structures directly to sheet metal or to purlins.
- Profiles, clamps and accessories manufactured from aluminium as per EN AW Standards.
- A2 stainless steel screws. Option of A4 screws depending on the aggressiveness of the environment.
- Guaranteed watertightness through a double EPDM gasket system.
- Option of grounding accessories and anti-theft nuts.



### Did you know that?

The name Gulpiyuri is taken from a breathtaking beach declared a natural monument. It is located between Ribadesella and Llanes, Asturias.

alusín solar

+34 984 11 27 59

alusinsolar@alusinsolar.com

Avilés Madrid Bogotá



CE Marking



ISO 9001, 14001 and 45001 certifications



Up to 25-year material warranty



100% recyclable materials



Rapid on-site response



Convenient installation



Watertightness warranty



National manufacture

## CLIMATE LOADS



WIND

Up to 144 km/h

Configurable up to 250 km/h



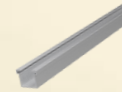
SNOW

Up to 1 kN/m<sup>2</sup>

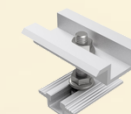
Configurable up to 2 kN/m<sup>2</sup>

## SYSTEM COMPONENTS

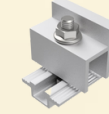
G30 BAR



INTERMEDIATE CLAMP



END CLAMP



EDPM

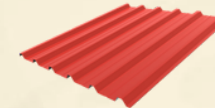


FASTENING



## COMPATIBLE ROOF TYPES

RIBBED SHEET METAL



SANDWICH PANEL

